

elastic stop line

Back
1 cut on fold

⊗
Snap placement

Flap
← fold

Flap
→

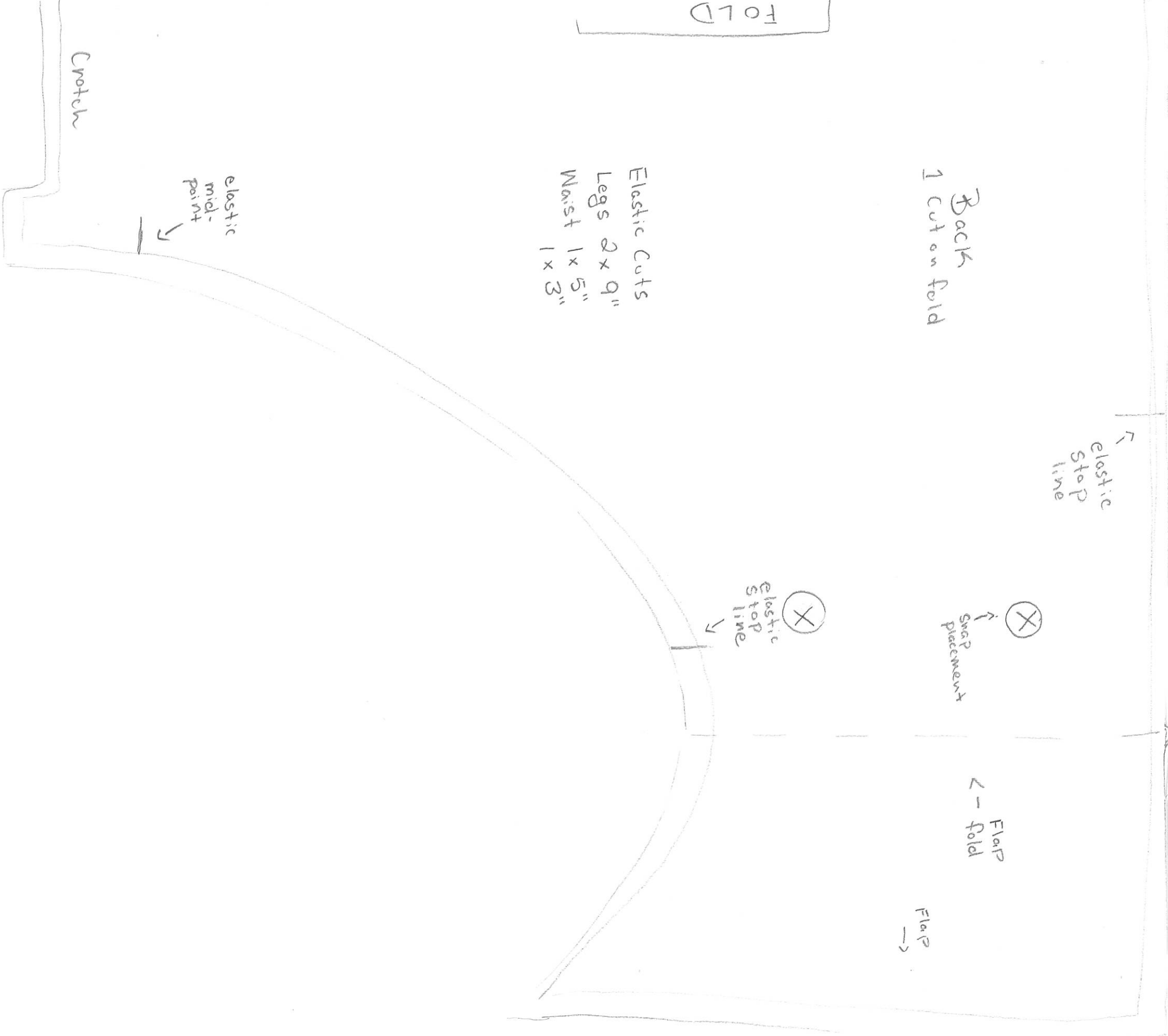
FOLD

Elastic Cuts
Legs 2 x 9"
Waist 1 x 5"
1 x 3"

⊗
elastic stop line

elastic mid-point

Crotch



Fold

Front
1 cut on fold

elastic
stop line



Flap
fold

Flap



elastic
stop
line

12-24 months old

Crotch

sew line
cut line

